

TRANSPOSITION

ASSIGNMENT #6

TRANSPOSE THE KEY, NOTES AND CHORDS OF THE FOLLOWING EXAMPLE FOR EACH INSTRUMENT

NAME _____

CONCERT EXAMPLE, HIGH AND LOW OCTAVES

Musical notation for a concert example in 4/4 time, key of D major. The melody consists of eighth and quarter notes. Chords G⁹(#11) and D^{ma}7 are indicated above the staff.

TRUMPET (HIGH OCTAVE EXAMPLE)

Empty musical staff for Trumpet transcription.

ALTO SAX (LOW OCTAVE EXAMPLE)

Empty musical staff for Alto Sax transcription.

CLARINET (HIGH OCTAVE EXAMPLE)

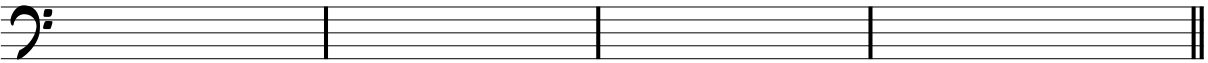
Empty musical staff for Clarinet transcription.

TENOR SAX (LOW OCTAVE EXAMPLE)

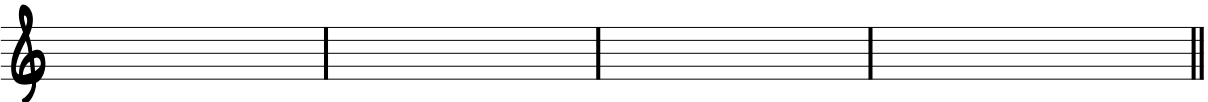
Empty musical staff for Tenor Sax transcription.

PG. 2. ASSIGNMENT #6

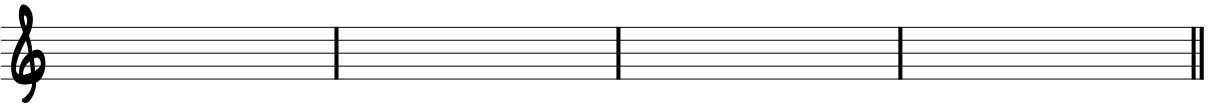
TENOR TROMBONE (LOW OCTAVE EXAMPLE)



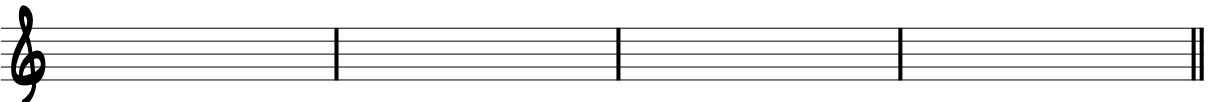
BARI SAX (ONE OCTAVE BELOW LOW OCT. EX.)



FLUTE (ONE OCTAVE ABOVE HIGH OCT. EX.)



BASS CLARINET (ONE OCTAVE BELOW LOW OCT. EX.)



SOPRANO SAX (HIGH OCTAVE EXAMPLE)



PICCOLO (TWO OCTAVES ABOVE HIGH OCT. EX.)

